



# Louisiana Senate Finance Committee



## FY21 Proposed Budget

**04-160 – Department of  
Agriculture & Forestry**

June 2020

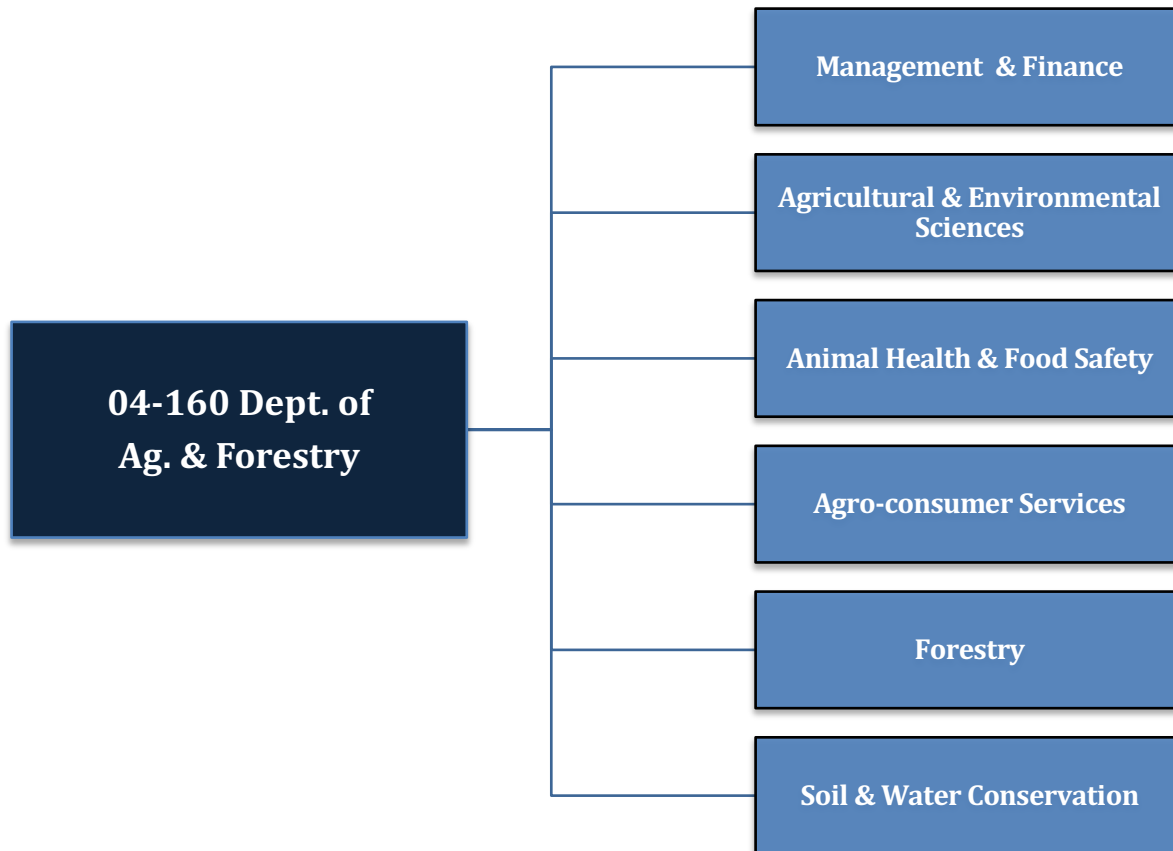
*Senator Patrick Page Cortez, President  
Senator Bodi White, Chairman*



# FY21 Proposed Budget

## Schedule 04-160 — Dept. of Ag & Forestry

Departmental mission — The mission of the Louisiana Department of Agriculture and Forestry is to administer the laws, rules and regulations of the state regarding the growing, harvesting, processing, storing and sale of forest, crop and livestock commodities. These laws, rules and regulations are to ensure that foods are prepared in sanitary processing facilities and are safe to eat, that the state's food manufacturing sector receives the full benefit of the agency's marketing expertise, that the state's soil and water resources are protected to ensure the optimum growth and yield of crops and forests, that the state's forests are protected from harmful diseases and fires, and that Louisiana livestock receives the best in veterinary care. The department also works with other state, regional, national and international sectors of business and government in fulfillment of its goal to provide oversight services and administrative assistance in the conduct of the affairs of rural Louisiana.



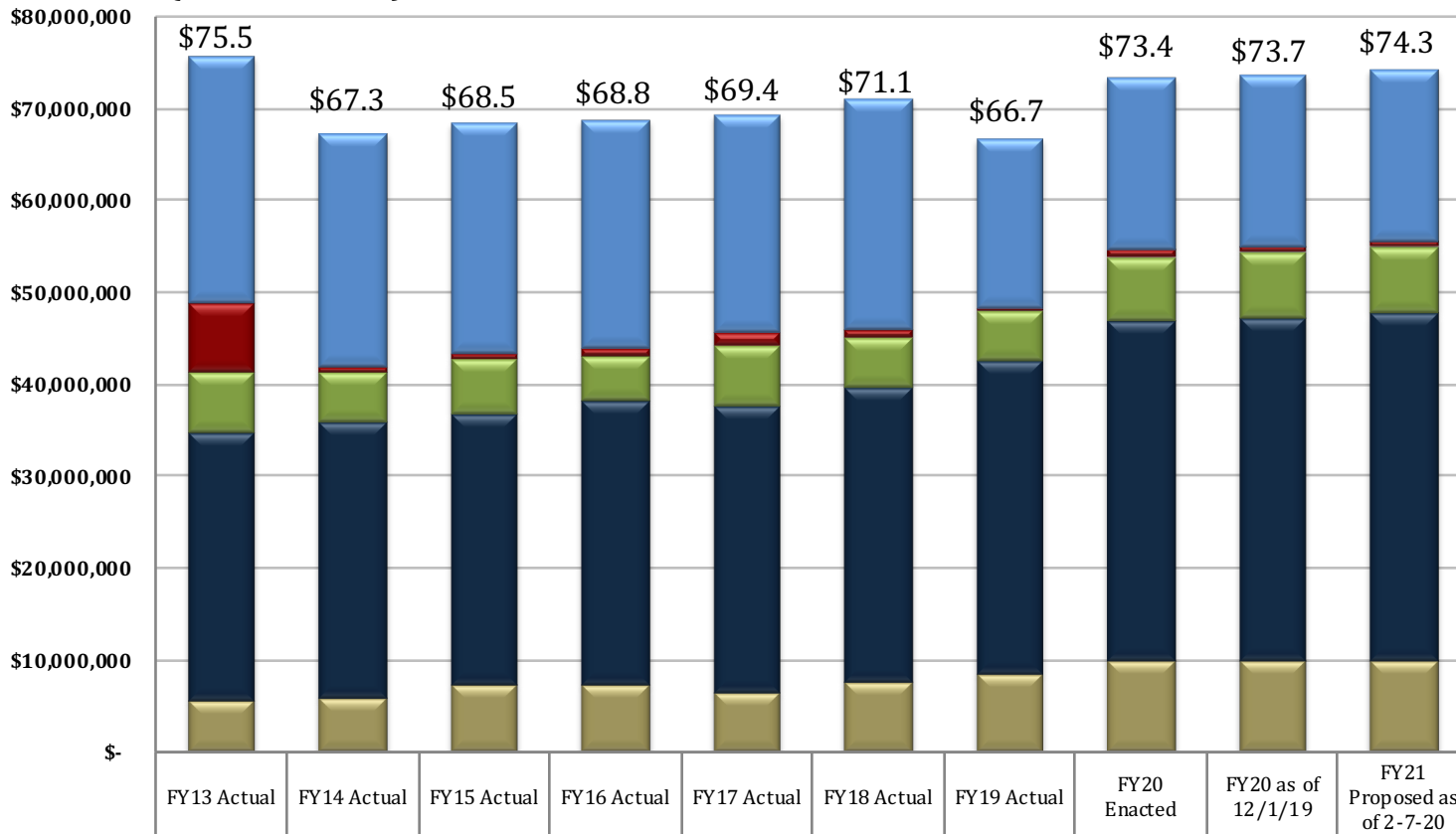


# Dept. of Ag. & Forestry

## Changes in Funding since FY13

**Total Budget by Fiscal Year and Means of Finance  
(in \$ millions)**

Change from FY13 to FY21 is -1.6%.



SGF	\$26,640,79	\$25,310,40	\$24,978,02	\$24,979,20	\$23,662,79	\$25,275,04	\$18,293,32	\$18,787,38	\$18,787,38	\$18,802,78
IAT	\$7,487,406	\$739,733	\$620,030	\$636,945	\$1,595,571	\$676,004	\$408,902	\$678,592	\$678,592	\$447,345
FSGR	\$6,742,470	\$5,478,626	\$6,089,614	\$5,032,531	\$6,506,357	\$5,472,748	\$5,517,983	\$6,981,777	\$6,981,777	\$7,281,777
STAT DED	\$29,012,84	\$29,996,43	\$29,461,42	\$30,700,54	\$31,182,62	\$32,094,97	\$34,091,62	\$37,115,48	\$37,415,48	\$37,794,02
FED	\$5,654,016	\$5,814,506	\$7,306,299	\$7,491,507	\$6,470,804	\$7,612,026	\$8,385,158	\$9,809,973	\$9,809,973	\$9,972,168

### Interim Updates

**01/27/2020** - DAF - 04-160 - The Advocate - The Wellcana Group cultivation and manufacturing site for marijuana is located in a non-descript warehouse near Highland Road and I-10. About 570 marijuana plants are being harvested each month. Only medical marijuana is legal in Louisiana, but the facility is prepared to transition to recreational marijuana if necessary. Beau Druilhet is the director of cultivation for Wellcana Group. When you enter the facility, you smell a strong scent. That scent is terpene. Each strain of cannabis has a unique terpene profile. After 56 days in bloom, a plant is harvested. Wellcana expects to build a 100,000 square foot indoor marijuana facility between Baton Rouge and Lafayette that will create between 100 and 200 new full and part-time jobs. Wellcana is working on prototypes to introduce medical marijuana in topicals, strips, edible chews, and metered dose inhalers.

**01/30/2020** - DAF - 04-160 - WAFB - In cooperation with Ilerra Holistic Healthcare, the SU Ag Center released CBD products to licensed pharmacies in Louisiana.



# Significant Budget Adjustments Proposed for FY21

State General Fund (Direct)	Interagency Transfers	Fees and Self-generated Revenues	Statutory Dedications	Federal Funds	Total	T.O.	Adjustment
<b>\$18,787,387</b>	<b>\$678,592</b>	<b>\$6,981,777</b>	<b>\$37,415,484</b>	<b>\$9,809,973</b>	<b>\$73,673,213</b>	<b>568</b>	<b>FY20 Existing Operating Budget as of 12-1-19</b>
\$565,542	\$0	\$0	\$428,737	\$0	\$994,279	0	Market Rate Classified
\$73,839	\$0	\$0	\$85,593	\$0	\$159,432	0	Civil Service Training Series Adjustment
\$10,359	\$0	\$0	\$80,480	\$0	\$90,839	0	Related Benefits Base Adjustment
(\$62,152)	\$0	\$0	(\$63,114)	\$0	(\$125,266)	0	Retirement Rate Adjustment
\$80,145	\$0	\$0	\$39,177	\$0	\$119,322	0	Group Insurance Rate Adjustment for Active Employees
\$171,284	\$0	\$0	\$0	\$0	\$171,284	0	Group Insurance Rate Adjustment for Retirees
\$494,390	\$0	\$0	\$116,053	\$0	\$610,443	0	Salary Base Adjustment
(\$692,100)	\$0	\$0	(\$279,068)	\$0	(\$971,168)	0	Attrition Adjustment
\$0	\$0	\$0	\$1,295,941	\$39,240	\$1,335,181	0	Acquisitions & Major Repairs
(\$117,950)	\$0	\$0	(\$1,635,210)	(\$1,350)	(\$1,754,510)	0	Non-Recurring Acquisitions & Major Repairs
\$0	\$0	\$0	(\$300,000)	\$0	(\$300,000)	0	Non-recurring Carryforwards
(\$6,208)	\$0	\$0	\$0	\$0	(\$6,208)	0	Risk Management
\$28,728	\$0	\$0	\$0	\$0	\$28,728	0	Legislative Auditor Fees
(\$1,338)	\$0	\$0	\$0	\$0	(\$1,338)	0	UPS Fees
\$14,164	\$0	\$0	\$0	\$0	\$14,164	0	Civil Service Fees
(\$925)	\$0	\$0	\$0	\$0	(\$925)	0	State Treasury Fees
\$20,017	\$0	\$0	\$0	\$0	\$20,017	0	Office of Technology Services (OTS)
(\$16,517)	\$0	\$0	\$0	\$0	(\$16,517)	0	Office of State Procurement
(\$33,596)	\$0	\$0	\$0	\$0	(\$33,596)	0	Topographic Mapping
<b>\$527,682</b>	<b>\$0</b>	<b>\$0</b>	<b>(\$231,411)</b>	<b>\$37,890</b>	<b>\$334,161</b>	<b>0</b>	<b>Total Statewide Adjustments</b>
\$0	\$0	\$0	\$319,305	\$104,385	\$423,690	5	TOTAL NEW AND EXPANDED ADJUSTMENT
(\$80,000)	(\$250,000)	\$0	\$0	\$0	(\$330,000)	0	TOTAL NON-RECURRING OTHER ADJUSTMENT
(\$432,283)	\$15,000	\$300,000	\$290,647	\$19,920	\$193,284	0	TOTAL OTHER ADJUSTMENTS ADJUSTMENT
\$0	\$3,753	\$0	\$0	\$0	\$3,753	0	TOTAL OTHER TECHNICAL ADJUSTMENTS ADJUSTMENT
<b>\$18,802,786</b>	<b>\$447,345</b>	<b>\$7,281,777</b>	<b>\$37,794,025</b>	<b>\$9,972,168</b>	<b>\$74,298,101</b>	<b>573</b>	<b>Total FY21 Proposed Budget</b>
\$15,399	(\$231,247)	\$300,000	\$378,541	\$162,195	\$624,888	5	Total Adjustments (Statewide and Agency-Specific)



# Department of Agriculture & Forestry

## Non-Statewide Adjustments Proposed for FY21

### New and Expanded Adjustments

State General Fund (Direct)	Interagency Transfers	Fees and Self-generated Revenues	Statutory Dedications	Federal Funds	Total	T.O.	Adjustment
\$0	\$0	\$0	\$319,305	\$0	\$319,305	4	AG/ENVIRON SCIENCE -Act 164 of the 2019 Regular Legislative Session authorizes the cultivation and processing of industrial hemp and tasks Agriculture with oversight and review of seed producers, growers, processors, and contract carriers of hemp. Agriculture will hire 4 inspector positions which will be responsible for collecting samples for testing and inspecting products in every phase of production. Additional expenditures will include travel for an out-of-state conference, leased vehicles, uniforms, office supplies, and lab testing. These expenditures will be made from the Seed Fund and will be covered by the additional revenue generated in the fund from licensing fees for seed producers, growers, processors, and contract carriers and lab testing fees for each sample of industrial hemp tested.
\$0	\$0	\$0	\$0	\$104,385	\$104,385	1	ANIMAL HEALTH AND -Increase of one authorized inspector position and associated expenditures to conduct seafood inspections in the New Orleans area. The United States Department of Commerce (USDC) no longer has a federal inspector performing these inspections. They have asked Agriculture to take over these inspections and will reimburse them for their work.
\$0	\$0	\$0	\$319,305	\$104,385	\$423,690	5	<b>Total New and Expanded Adjustments</b>

### Non-Recurring Other Adjustments

State General Fund (Direct)	Interagency Transfers	Fees and Self-generated Revenues	Statutory Dedications	Federal Funds	Total	T.O.	Adjustment
(\$80,000)	\$0	\$0	\$0	\$0	(\$80,000)	0	AG/ENVIRON SCIENCE -Non-recurring funding for citrus spraying, which was added during the 2019 Regular Legislative Session and passed through to Plaquemines Parish to spray orange groves that were infected with a bacterial disease.
\$0	(\$250,000)	\$0	\$0	\$0	(\$250,000)	0	FORESTRY -Reduction in Interagency Transfer funding from the Office of State Fire Marshal for fire prevention and suppression activities in rural Louisiana. The Department used to receive \$250,000 annually starting in FY 12 but the Fire Marshal's Office discontinued signing the IAT agreement in FY 19.
(\$80,000)	(\$250,000)	\$0	\$0	\$0	(\$330,000)	0	<b>Total Non-Recurring Other Adjustments</b>



# Department of Agriculture & Forestry

## Non-Statewide Adjustments Proposed for FY21

### Other Adjustments

State General Fund (Direct)	Interagency Transfers	Fees and Self-generated Revenues	Statutory Dedications	Federal Funds	Total	T.O.	Adjustment
\$0	\$0	\$0	\$0	\$19,920	\$19,920	0	ANIMAL HEALTH AND -Funding for the replacement of 5 vehicles with over 150,000 miles with leased vehicles. The number of vehicles being replaced in each program is as follows: Animal Health (4) and Agro-Consumer Services (1). Statutory Dedication is the Agricultural Commodity Dealers and Warehouse Fund.
\$0	\$0	\$0	\$4,980	\$0	\$4,980	0	AGRO-CONSUMER SERV -Funding for the replacement of 5 vehicles with over 150,000 miles with leased vehicles. The number of vehicles being replaced in each program is as follows: Animal Health (4) and Agro-Consumer Services (1). Statutory Dedication is the Agricultural Commodity Dealers and Warehouse Fund.
\$0	\$0	\$0	\$216,717	\$0	\$216,717	0	AGRO-CONSUMER SERV -Increase in rent expenditures for office buildings and other Department facilities throughout the state. Statutory Dedication is the Louisiana Agricultural Finance Authority Fund.
\$0	\$0	\$300,000	\$0	\$0	\$300,000	0	FORESTRY -Increase in Fees and Self-generated Revenues due to a planned timber sale from Alexander State Forest that will bring in an estimated \$450,000 over an 18 month period starting in January 2020. Forestry anticipates receiving \$300,000 in FY 21 which will be utilized for necessary maintenance in the State Forest.
\$0	\$15,000	\$0	\$0	\$0	\$15,000	0	FORESTRY -Increase in Interagency Transfer funding from the Louisiana Military Department from \$45,000 to \$60,000. The agreement is for the department to conduct prescribed burning at Camp Beauregard and Camp Minden.
\$0	\$0	\$0	\$13,394	\$0	\$13,394	0	FORESTRY -Increase in the Forest Protection Fund to perform vehicle maintenance and purchase additional supplies for firefighting.
\$0	\$0	\$0	\$55,556	\$0	\$55,556	0	FORESTRY -Increase in the Forestry Productivity Fund for administrative expenses related to the Forestry Productivity Program. The Department is increasing the amount of the Forestry Productivity Fund that is passed through to landowners from \$3 million to \$3.5 million in its Pass Through Funds unit (20-941) due to an increase in the number of applicants. 10% of the Forestry Productivity Fund is allowed to be used for administrative expenses. This amount represents the increase needed to fully utilize the 10% for administrative expenses in the Forestry Program.
(\$432,283)	\$0	\$0	\$0	\$0	(\$432,283)	0	FORESTRY -Reduction in salaries and related benefits for firefighting positions which will be addressed in part by not filling vacant positions. This will potentially result in the closure of fire substations and increase response time to wildfires.
(\$432,283)	\$15,000	\$300,000	\$290,647	\$19,920	\$193,284	0	<b>Total Other Adjustments</b>



# Department of Agriculture & Forestry

## Technical Adjustments Proposed for FY21

### Technical Adjustments

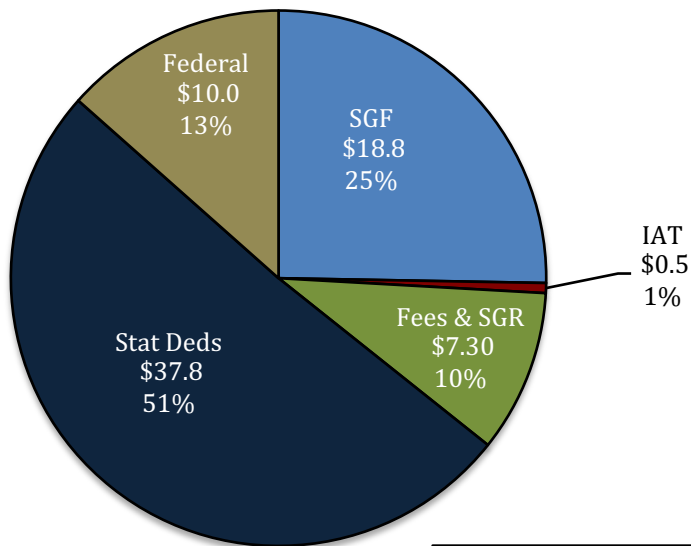
State General Fund (Direct)	Interagency Transfers	Fees and Self-generated Revenues	Statutory Dedications	Federal Funds	Total	T.O.	Adjustment
\$0	\$0	\$0	\$0	\$188,531	\$188,531	1	MGMT & FINANCE -Transferring one authorized unclassified position from the Animal Health and Food Safety Program to the Management and Finance Program. This position is for a Deputy Chief of Staff that works directly under the Commissioner of Agriculture and Forestry and is therefore more appropriately located in the Managment and Finance Program.
\$0	\$0	\$0	\$0	(\$188,531)	(\$188,531)	(1)	ANIMAL HEALTH AND -Transferring one authorized unclassified position from the Animal Health and Food Safety Program to the Management and Finance Program. This position is for a Deputy Chief of Staff that works directly under the Commissioner of Agriculture and Forestry and is therefore more appropriately located in the Managment and Finance Program.
\$0	\$3,753	\$0	\$0	\$0	\$3,753	0	SOIL/WATER CONSERV -Adjustment to properly align Interagency Transfer funding from the Coastal Protection and Restoration Authority between the Agriculture and Forestry operating budget (Schedule 04-160) and the Agriculture and Forestry Pass Through Funds unit (Schedule 20-941). There is a corresponding decrease in Pass Through Funds (20-941).
\$0	\$3,753	\$0	\$0	\$0	\$3,753	0	<b>Total Technical Adjustments</b>



# Agriculture and Forestry

## FY21 Proposed Means of Finance

**FY21 Proposed  
Total Means of Finance  
(In Millions)**



Total \$74.3 m.

### Non-SGF Sources of Funding:

Non-SGF means of finance in the department include Interagency Transfers, Fees & Self-generated Revenues, Statutory Dedications and Federal monies.

**Interagency Transfers** are derived from the Louisiana Department of Health, the Office of the State Fire Marshal for wildfire prevention and suppression activities, the Office of Coastal Protection and Restoration for developing erosion control plans along the coast of Louisiana, Best Management practices, water quality, and wetland resource programs.

**Fees and Self-Generated Revenues** are derived from insurance and other reimbursements; reimbursement from LAFA for salaries of maintenance personnel; grading fees assessed on meat, meat products, fish and fish products; a fee of \$2.00 per calf hood vaccination at auction markets; vaccination fees; Sale of Health Certificates; Equine Infectious Anemia Surveillance & Horse Identification Program; Deer farming; Turtle Farmers License fee; Livestock Sanitary Board; Poultry Graders; Dairy and Poultry Trust Fund; LA Egg Commission; Egg Assessment Fees; funds collected from assessments on sales of milk and dairy products; timber sales from the State Forests; fees assessed for prescribed burning and general forestry assistance materials; and from the sale of commodities and services.



# Agriculture and Forestry

## FY21 Proposed Means of Finance

### Non-SGF Sources of Funding: (Continued)

**Statutory Dedications** are received from a variety of sources, including the

- Structural Pest Control Commission Fund (S) via fees on branches and contracts of termite control operators;
- Feed and Fertilizer Fund (S) via tonnage fees on feed and fertilizer;
- Louisiana Agricultural Finance Authority (LAFA) Fund (S) as a result of interest income and fees collected with any bonds issued by LAFA;
- Pesticide Fund (S) via fees from labeling and registration of certain pesticides;
- Petroleum Products Fund (S) via assessments, fees, penalties, and all other funds related to the inspection, regulation, and analysis of petroleum products, any commercial weighing or measuring device used in the distribution handling or sale of petroleum products and enforcement;
- Agricultural Commodity Dealers and Warehouse Fund (S) via assessments on commodities stored at the first point of sale, inspection and certification of moisture meters, warehouse licenses;
- Weights and Measures Fund (S) via inspection fees for weights and measures scales;
- Boll Weevil Eradication Fund (S) via penalties and fines charged to cotton growers under the regulations of the Boll Weevil Eradication Program;
- Horticulture and Quarantine Fund (S) via fees collected for Apiary permits, fees for collecting and enforcing different horticultural professions and occupations, fees for inspection and certification of cotton for the presence of the boll weevil, and reasonable fees to help defray the expenses incurred for salaries for inspecting nursery stock grown or propagated for sale or distribution;
- Seed Commission Fund (S) via fees from seed certification;
- Sweet Potato Pests and Diseases Fund (S) via sweet potato inspection fees;
- Livestock Brand Commission Fund (S) via fees for recording brands or marks, renewals and transfers;

### Non-SGF Sources of Funding: (Continued)

- Forest Protection Fund (S) paid by the landowners at the rate of 8 cents per acre;
- Forest Productivity Fund (S) that receives 75% of the state's share of the timber severance tax;
- Agricultural Commodity Self-Insurance Fund (S)
- and the Grain and Cotton Indemnity Fund (S).

*(S) = Statutory Fund*

**Federal Funds** are received from the U.S. Department of Agriculture, the Environmental Protection Agency (EPA) - Enforcement and Certification Programs, the Ground Water Protection Worker Protection & Endangered Species Program, the USDA - Imported Fire Ant Program, the EPA - Feed Inspection Capacity Program, the federally funded Livestock Sanitary Board Program, reimbursements from the U.S. Department of Agriculture (USDA) for grading and certification of meat and meat products, reimbursements from the U.S. Department of Commerce for certification of fish and fish products, Federal Egg Product Inspection, the Federal Container Salvage Fund, State Administrative Expenses for food distribution, the U.S. Department of Agriculture (USDA) for commodity credit for reimbursement of audit expenses, Fruit and Vegetable Grain Cooperative Agreement, Weights and Measures Cooperative Agreement, the Crop and Livestock Statistical Reporting Service, the U.S. Forest Service for forest protection and fire assistance; U.S. Department of Agriculture (USDA) for development of watershed plans.



# Dept. of Ag. & Forestry Dedicated Funds FY19, FY20, and FY21

Dedicated Funds	Source of Funding	FY19 Actual	FY20 EOB	FY21 Proposed
Agricultural Commodity Dealers & Warehouse Fund	Fees, fines, assessments, and penalties	\$1,827,321	\$2,318,769	\$2,277,455
Boll Weevil Eradication Fund	Fees and Fines to cotton producers	\$57,956	\$0	\$0
Feed and Fertilizer Fund	Fees, fines, assessments, and penalties	\$2,705,390	\$3,266,992	\$3,508,480
Forest Protection Fund	Forest protection tax on timber land	\$806,606	\$806,606	\$820,000
Forestry Productivity Fund	Portion of timber severance tax	\$333,333	\$333,333	\$388,889
Horticulture and Quarantine Fund	Fees, fines, assessments, and penalties	\$2,250,702	\$2,600,000	\$2,600,000
Livestock Brand Commission Fund	Fees related to livestock branding and recordation	\$10,000	\$40,000	\$10,000
Louisiana Agricultural Finance Authority Fund	A portion of taxable net slot machine proceeds	\$11,802,482	\$11,805,932	\$11,809,510
Pesticide Fund	Fees, fines, assessments, and penalties	\$5,784,000	\$5,723,155	\$5,770,429
Petroleum Products Fund	Fees, fines, assessments, and penalties	\$4,005,259	\$4,628,921	\$5,180,196
Seed Fund	Fees	\$785,979	\$807,008	\$1,126,313
Structural Pest Control Commission Fund	Permit, registration, and related fees	\$1,334,789	\$1,903,535	\$1,623,158
Sweet Potato Pests and Diseases Fund	Fees on bushels of sweet potatoes	\$159,035	\$200,000	\$200,000
Weights and Measures Fund	Fees on commercial weighing and measuring devices	\$2,228,776	\$2,981,233	\$2,479,595
<b>TOTALS</b>		<b>\$34,091,628</b>	<b>\$37,415,484</b>	<b>\$37,794,025</b>



# Dept. of Ag. & Forestry

## FY21 Proposed Means of Finance by Agency

04-160 — Dept. of Ag. & Forestry FY21 Proposed Means of Financing by Agency						
Total MOF by Agency	SGF	IAT	FSGR	Stat Deds	Federal	Total
Management & Finance	\$10,373,892	\$189,035	\$2,053,575	\$7,352,180	\$865,578	\$20,834,260
Agricultural & Environmental Sciences	\$0	\$0	\$74,962	\$12,409,331	\$702,317	\$13,186,610
Animal Health & Food Safety	\$1,420,657	\$0	\$4,002,688	\$4,189,534	\$4,521,349	\$14,134,228
Agro-Consumer Services	\$0	\$0	\$621,016	\$7,685,145	\$515,532	\$8,821,693
Forestry	\$7,008,237	\$60,000	\$529,536	\$5,626,782	\$2,091,076	\$15,315,631
Soil & Water Conservation	\$0	\$198,310	\$0	\$531,053	\$1,276,316	\$2,005,679
<b>Dept. of Ag &amp; Forestry</b>	<b>\$18,802,786</b>	<b>\$447,345</b>	<b>\$7,281,777</b>	<b>\$37,794,025</b>	<b>\$9,972,168</b>	<b>\$74,298,101</b>

Agency	Program Description
<b>Management &amp; Finance</b>	Provides department-wide coordination, personnel and basic resources which are essential to the accomplishment of the Department's mission, in a timely, effective and accurate manner and in compliance with applicable laws, rules and regulations.
<b>Agricultural &amp; Environmental Sciences</b>	The mission of the Office of Agricultural and Environmental Sciences is to ensure that animal feeds, pet foods, fertilizers, agricultural liming materials and pesticides meet all requirements of law; to monitor, prevent, control and eradicate plant pests and diseases that threaten Louisiana's agriculture, environment and economy; to facilitate agricultural exports through certification of products; to oversee the qualifications and practices of persons engaged in the green industry; to protect human health and the environment by ensuring the proper labeling, distribution, storage, use, application and disposal of pesticides, and through enforcement of all pesticide laws; to ensure that seed sold for planting meets label guarantees and quality standards; and to ensure a safe, abundant supply of food and fiber.
<b>Animal Health &amp; Food Safety</b>	Maintains a safe and healthful food supply for the people of Louisiana, while simultaneously protecting and safeguarding the producers of these products. The program inspects and grades food products, controls livestock diseases and tracks ownership of livestock through a branding activity. The activities of this program are: Administration, Federal/State Meat Program, Poultry and Egg Inspection, Food Quality Services, Livestock Disease Prevention, Livestock Theft Prevention, Emergency Response Team, and Food Distribution Program.



# Dept. of Ag. & Forestry

## FY21 Proposed Means of Finance by Agency

### 04-160 — Dept. of Ag. & Forestry

#### FY21 Proposed Means of Financing by Agency

Total MOF by Agency	SGF	IAT	FSGR	Stat Deds	Federal	Total
Management & Finance	\$10,373,892	\$189,035	\$2,053,575	\$7,352,180	\$865,578	\$20,834,260
Agricultural & Environmental Sciences	\$0	\$0	\$74,962	\$12,409,331	\$702,317	\$13,186,610
Animal Health & Food Safety	\$1,420,657	\$0	\$4,002,688	\$4,189,534	\$4,521,349	\$14,134,228
Agro-Consumer Services	\$0	\$0	\$621,016	\$7,685,145	\$515,532	\$8,821,693
Forestry	\$7,008,237	\$60,000	\$529,536	\$5,626,782	\$2,091,076	\$15,315,631
Soil & Water Conservation	\$0	\$198,310	\$0	\$531,053	\$1,276,316	\$2,005,679
<b>Dept. of Ag &amp; Forestry</b>	<b>\$18,802,786</b>	<b>\$447,345</b>	<b>\$7,281,777</b>	<b>\$37,794,025</b>	<b>\$9,972,168</b>	<b>\$74,298,101</b>

Agency	Program Description
<b>Agro-Consumer Services</b>	Ensures that equity prevails in the marketplace by regulating various aspects of commerce and trade and by promoting and heightening consumer awareness of Louisiana's agricultural commodities to increase sales, thereby enhancing the economic well being of Louisiana farmers and the State as a whole. The Office ensures that Louisiana consumers get what they pay for, that producers have markets available and receive fair compensation for their commodities, and that businesses have a favorable environment in which to operate.
<b>Forestry</b>	Ensures sustained, multiuse forestlands for the citizens of Louisiana. This goal takes into account the production of wood fiber while enhancing the recreational, wildlife and environmental values of forestlands.
<b>Soil &amp; Water Conservation</b>	Achieves a productive balance between Louisiana agricultural production and processing and a healthy environment, wherein soil loss is reduced to within tolerable limits, water quality impairments due to agricultural processes are significantly reduced, and the quality of the state's wildlife habitat, wetlands and other natural areas and resources are enhanced.



# Department of Ag. & Forestry

## FY19, FY20, and FY21 Comparison

### Total Funding — All Means of Finance

<b>Total Funding</b>	<b>FY19 Actual</b>	<b>FY20 Enacted</b>	<b>FY20 EOB as of 12-1-19</b>	<b>FY21 Proposed</b>	<b><i>Difference FY20EOB HB1 vs. FY21 Proposed</i></b>
Management & Finance	\$ 18,068,200	\$ 19,821,406	\$ 19,821,406	\$ 20,834,260	\$ 1,012,854
Agricultural & Environmental Sciences	\$ 11,465,905	\$ 12,904,367	\$ 13,204,367	\$ 13,186,610	\$ (17,757)
Animal Health & Food Safety	\$ 12,847,821	\$ 14,268,504	\$ 14,268,504	\$ 14,134,228	\$ (134,276)
Agro-Consumer Services	\$ 8,036,231	\$ 8,925,234	\$ 8,925,234	\$ 8,821,693	\$ (103,541)
Forestry	\$ 14,507,601	\$ 15,443,193	\$ 15,443,193	\$ 15,315,631	\$ (127,562)
Soil & Water Conservation	\$ 1,771,233	\$ 2,010,509	\$ 2,010,509	\$ 2,005,679	\$ (4,830)
<b>TOTAL</b>	<b>\$ 66,696,991</b>	<b>\$ 73,373,213</b>	<b>\$ 73,673,213</b>	<b>\$ 74,298,101</b>	<b>\$ 624,888</b>
Total Authorized FTEs	566	568	568	573	5



# Dept. of Ag. & Forestry Categorical Expenditures FY19, FY20, and FY21

Expenditure Category	FY19 Actual	FY20 EOB (as of 12-01-19)	FY21		Difference FY20 to FY21
			Proposed Budget	Category as Percent of Total	
<b>Personal Services:</b>	<b>\$51,378,119</b>	<b>\$55,015,209</b>	<b>\$55,926,549</b>	<b>75.27%</b>	<b>\$911,340</b>
Salaries	\$30,274,943	\$31,381,549	\$31,920,019	42.96%	\$538,470
Other Compensation	\$1,290,726	\$1,386,123	\$1,572,995	2.12%	\$186,872
Related Benefits	\$19,812,450	\$22,247,537	\$22,433,535	30.19%	\$185,998
<b>Operating Expenses:</b>	<b>\$9,310,845</b>	<b>\$10,214,670</b>	<b>\$10,877,426</b>	<b>14.64%</b>	<b>\$662,756</b>
Travel	\$287,021	\$333,466	\$350,851	0.47%	\$17,385
Operating Services	\$5,703,376	\$6,366,868	\$6,790,114	9.14%	\$423,246
Supplies	\$3,320,448	\$3,514,336	\$3,736,461	5.03%	\$222,125
<b>Professional Services</b>	<b>\$215,355</b>	<b>\$438,942</b>	<b>\$463,942</b>	<b>0.62%</b>	<b>\$25,000</b>
<b>Other Charges:</b>	<b>\$4,776,436</b>	<b>\$6,249,882</b>	<b>\$5,691,503</b>	<b>7.66%</b>	<b>(\$558,379)</b>
Other Charges	\$2,500,393	\$3,676,427	\$3,113,723	4.19%	(\$562,704)
Debt Service	\$0	\$0	\$0	0.00%	\$0
Interagency Transfers	\$2,276,043	\$2,573,455	\$2,577,780	3.47%	\$4,325
<b>Acquisitions &amp; Major Repairs:</b>	<b>\$1,016,236</b>	<b>\$1,754,510</b>	<b>\$1,338,681</b>	<b>1.80%</b>	<b>(\$415,829)</b>
Acquisitions	\$1,016,236	\$1,461,300	\$1,282,681	1.73%	(\$178,619)
Major Repairs	\$0	\$293,210	\$56,000	0.08%	(\$237,210)
<b>Total Expenditures</b>	<b>\$66,696,991</b>	<b>\$73,673,213</b>	<b>\$74,298,101</b>	<b>100.00%</b>	<b>\$624,888</b>

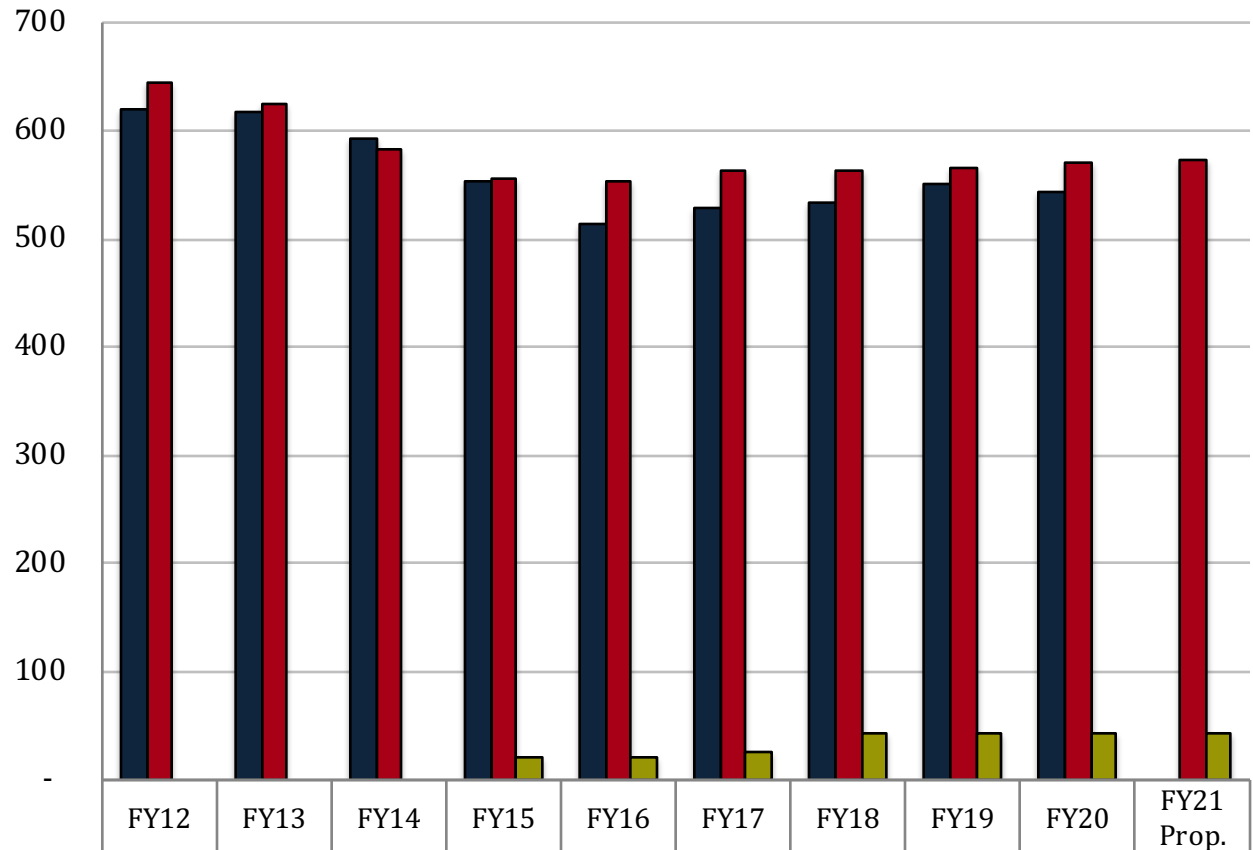


# Department of Ag. and Forestry

## FTEs, Authorized Positions, and Other Charges Positions

FY21 Proposed Budget includes funding for related benefits of all positions in the amount of \$22.4m.

Out of the \$22.4m, \$10.5m are for UAL payments, \$5.9m are for retirees' health benefits, the remaining amount of \$6.1m are the employer contributions to the benefits of active employees, of which 47% is SGF.



■ Total FTEs (as of July 1 of each fiscal year)	621	618	592	554	514	528	533	550	544	-
■ Total Authorized Positions (Enacted)	644	625	582	555	553	563	563	566	570	573
■ Authorized Other Charges Positions	-	-	-	22	22	26	42	42	42	42

### Notes:

Data for Total FTEs uses the first weekly employment report published by State Civil Service in July at the start of the named fiscal year.

Data for Total Authorized Positions uses fiscal year enacted levels, except for FY21 Proposed.

Data for Other Charges Positions are reflected in the Executive Budget per Act 377 of the 2013 Regular Legislative Session (beginning in FY15).



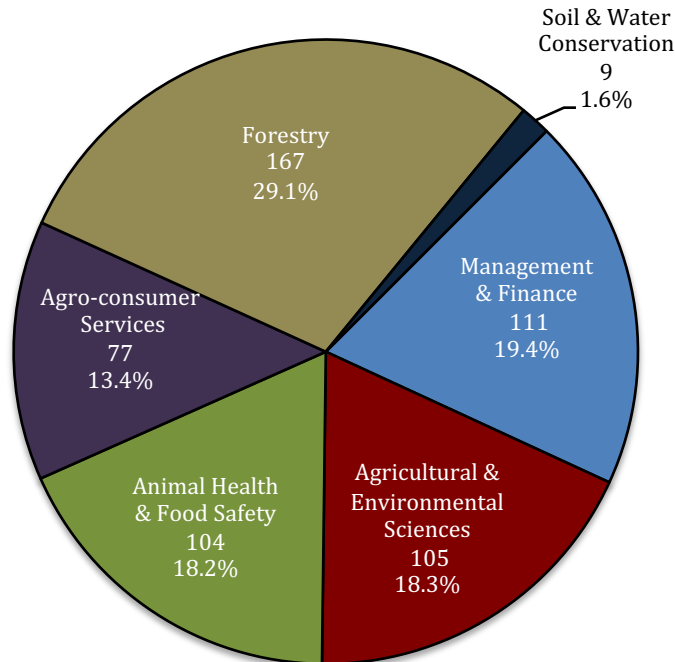
# Dept. of Ag. & Forestry

## FY21 Proposed Total Authorized Positions by Agency

**Forestry** – The largest categories of positions are spread among fire districts, including District 6 - Hammond, District 4 - Oberlin, District 3 - Jena, District 1 - Haughton, and District 2 - Monroe. The remaining positions are spread among administration, central services, enforcement, and education.

**Agro-Consumer Services** – The largest categories of positions include Weights and Measures and the Agricultural Commodities and Dealers Warehouse Activity. The remaining positions are spread among the Dairy Stabilization Board, Administration, and Commodity Promotion and Research.

**Animal Health & Food Safety** – The largest categories of positions include Federal/State Meat Activity, the Livestock Sanitary Board, and the Food Distribution Activity. The remaining positions are spread among Poultry and Eggs, Fruit and Vegetables, Livestock Brand Commission, Promotion and Research, and the Feed Program.



**Soil and Water Conservation** – Duties of these positions include administration of the Agricultural Solid Waste Program, Federal Conservation Program, Coastal Marsh Vegetation Planting Program, USDA State Cooperative Soil Survey Program, EPA Clean Water Act provisions, and educational outreach.

**Management & Finance** – The largest categories of positions include support services and fleet and facility operations. The remaining positions are spread among executive functions, IT, print shop, market information, Indian Creek Recreation Area, and the La. Agricultural Finance Authority.

**Agricultural & Environmental Services** – The largest categories of positions include the Pesticide & Environmental Program, the Agricultural Chemistry Program, and the Horticulture & Quarantine Program. The remaining positions are spread among the Seed, Sweet Potato, Pest Control, Pesticide Enforcement, Pesticide Certification, USDA Horticulture, Boll Weevil, and Food Safety Programs.

Dept. of Ag. & Forestry	
Management & Finance	111
Agric. & Environmental Sciences	105
Animal Health & Food Safety	104
Agro-consumer Services	77
Forestry	167
Soil & Water Conservation	9
<b>Total Positions</b>	<b>573</b>



# FY21 Proposed Budget

## Schedule 04-160 — Staff Demographic Data

The following table shows a breakdown of departmental staff by demographic data.

Gender	
Female	203
Male	398
Race	
Black	49
White	540
Other	12
Retirement Eligible Within 1 Year	
	124



# Department of Agriculture and Forestry

## Major Initiative:

### Medical Marijuana –

**Regulation:** The Louisiana Department of Agriculture and Forestry (LDAF) is designated as the state's lead regulatory agency in the licensure and production of therapeutic marijuana. The Medical Marijuana Program is responsible for licensing and overseeing the production of medical marijuana to ensure safety of the final product.

**Authorized Growers:** The legislature has only authorized Louisiana State University Agricultural Center and Southern University Agricultural Center to be licensed to grow medical marijuana.

**Definition:** Medical Marijuana—substances which are identified as including any parts of the plant *Cannabis sativa*, and all derivatives or subspecies of all strains of cannabis, whether growing or not, the seeds thereof; the resin extracted from any part of such plant; and any compound, manufacture, salt, derivative, mixture, or preparation of such plant, its seeds, or resin, including tetrahydrocannabinol (THC), Cannabidiol (CBD) and all other naturally occurring cannabinol derivatives, whether produced directly or indirectly by extraction. Refer to Act— R.S. 40:1046, et. seq. §101. Definitions for more information.

**Licensed Pharmacies:** Nine (9) licensed pharmacies were appointed by the Louisiana Board of Pharmacy to distribute medical marijuana. May be subject to change. Please contact the Louisiana Board of Pharmacy for more information.

<http://www.pharmacy.la.gov/>

**Eligibility for Use:** Medical marijuana must be prescribed by a physician for certain conditions defined in statute. Those conditions include cancer, positive status for HIV, AIDS, cachexia or wasting syndrome, seizure disorders, epilepsy, spasticity, Crohn's disease, muscular dystrophy, multiple sclerosis, glaucoma, Parkinson's disease, severe muscle spasms, intractable pain, post traumatic disorder, and some symptoms associated with autism spectrum disorder. (See Act 261 of 2015; Act 708 of 2018; and Act 496 of 2018)

**Date of Availability:** The anticipated date of availability for medical marijuana was June, 2019.



# Department of Agriculture and Forestry

## Schedule 20-941: Ag & Forestry Pass-Through Funds

- Agriculture and Forestry Pass Through Funds includes pass through funds for the 44 Soil and Water Conservation Districts in Louisiana, the Temporary Emergency Food Assistance Program, Specialty Crop Block Grant, Volunteer Fire Assistance, Forest Land Enhancement Program, Southern Pine Beetle, Urban and Community Forestry, State Fire Assistance – Mitigation, Forest Stewardship Program, Forest Health Monitoring, and the Forest Productivity Program.
- This program is funded with state general fund, interagency transfers, fees and self-generated revenues, statutory dedications and federal funds. Interagency transfers are received from the Office of Coastal Protection and Restoration and the Louisiana State Racing Commission.
  - Statutory dedications are received from the Louisiana Agricultural Finance Authority Fund; the Forest Productivity Fund that receives 75% of the state's share of the timber severance tax; the Grain and Cotton Indemnity Fund; and the Agricultural Commodity Commission Self-Insurance Fund.
  - Federal funds are received from the U.S. Forest Service for 1) Urban Forestry Assistance, 2) Southern Pine Beetle, 3) Forest Land Enhancement, 4) Forest Health Program, 5) Volunteer Fire Assistance, 6) Forestry Stewardship Program, and 7) Fire Assistance. Federal funds are also received for Temporary Emergency Food Assistance Program, Specialty Crop Block Grant, and Soil and Water Conservation.

Amount	Expenditure Description
\$3,200,000	The Emergency Food Assistance Program
\$496,815	Specialty Crop Block Grant
\$1,116,500	Federal Grants including Volunteer Fire Assistance, Urban & Community Forestry, State Fire Assistance Mitigation, Forest Health Monitoring, and the Forest Stewardship Program
\$60,000	Racing Commission - Louisiana Horse Racing Industry Promotion
\$3,500,000	Forest Productivity Program
\$453,353	Agricultural Commodity Commission Self-Insurance Fund
\$1,290,172	Grain and Cotton Indemnity Fund
\$4,448,428	Soil and Water Conservation Districts
\$3,500,000	Forest Legacy Program - Clear Creek Wildlife Management Area
\$487,880	Natural Resources Conservation Service - Feral Swine Eradication and Control Pilot Program
<b>\$18,553,148</b>	<b>TOTAL</b>



# Department of Agriculture and Forestry

## Significant Points of Interest for FY21

- **\$319,305** – This adjustment includes additional funding for 4 inspector positions related to industrial hemp production. This is in accordance with Act 164 of the 2019 Regular Legislative Session. Funds will be paid out of the Seed Fund.
- **(\$432,283)** – This adjustment includes a reduction in state general fund for the Forestry Program. This change will reduce salaries and related benefits for firefighter positions. This may result in closure of fire substations and increase fire response times. This reduction is part of the \$24.1 million across-the-board state general fund reduction proposed by the governor.
- **(\$971,168)** – This number reflects an attrition adjustment for FY21.
- **\$610,443** – This increase represents a salary base adjustment for FY21.
- **\$994,279** – These monies provide for market rate classified adjustments in FY21.



# Agriculture and Forestry

## Enacted Appropriation vs. Actual Expenditure Analysis — FY17 to FY19

The following charts show Enacted vs. Actual budget comparisons for the specified fiscal years. Rarely are these totals exactly the same. The differences can be attributed to a number of reasons: revenue that was not collected, and therefore, expenditures that could not be made; unanticipated revenue shortfalls that may require a supplemental appropriation; expenditure authority that was anticipated to be needed but the expense never materialized; etc.

Agriculture and Forestry	FY17 Enacted	FY17 Actual	FY17 Difference
State General Fund	\$24,908,204	\$23,662,794	(\$1,245,410)
Interagency Transfers	\$641,125	\$1,595,571	\$954,446
Fees and Self-generated Revenues	\$7,296,414	\$6,506,357	(\$790,057)
Statutory Dedications	\$32,547,947	\$31,182,626	(\$1,365,321)
Federal	\$9,071,078	\$6,470,804	(\$2,600,274)
<b>TOTAL</b>	<b>\$74,464,768</b>	<b>\$69,418,152</b>	<b>(\$5,046,616)</b>

Agriculture and Forestry	FY18 Enacted	FY18 Actual	FY18 Difference
State General Fund	\$25,237,949	\$25,275,042	\$37,093
Interagency Transfers	\$686,125	\$676,003	(\$10,122)
Fees and Self-generated Revenues	\$7,029,476	\$5,472,747	(\$1,556,729)
Statutory Dedications	\$34,115,006	\$32,094,975	(\$2,020,031)
Federal	\$10,584,973	\$7,612,026	(\$2,972,947)
<b>TOTAL</b>	<b>\$77,653,529</b>	<b>\$71,130,793</b>	<b>(\$6,522,736)</b>

Agriculture and Forestry	FY19 Enacted	FY19 Actual	FY19 Difference
State General Fund	\$ 18,300,151	\$ 18,293,320	(\$6,831)
Interagency Transfers	\$ 680,206	\$ 408,902	(\$271,304)
Fees and Self-generated Revenues	\$ 8,404,409	\$ 5,517,983	(\$2,886,426)
Statutory Dedications	\$ 35,175,539	\$ 34,091,628	(\$1,083,911)
Federal	\$ 10,009,973	\$ 8,385,158	(\$1,624,815)
<b>TOTAL</b>	<b>\$ 72,570,278</b>	<b>\$ 66,696,991</b>	<b>(\$5,873,287)</b>

Note 1 – Negative Difference numbers show excess budget authority or less revenue than anticipated.

Note 2 — Cells highlighted in yellow mean more funding was needed or that a funding source was underbudgeted.

In any given year, the Department of Agriculture and Forestry may experience positive and negative budget adjustments. The budgeted amounts may change due to supplemental adjustments, receipt of new grants, changes in estimates of the Revenue Estimating Conference, or other unanticipated factors.



# Impact from COVID-19

## Department of Agriculture and Forestry Response to the Senate Committee on Finance:

### In response to the COVID-19 crisis, LDAF has done or is currently doing the following:

1. USDA food commodities are available in our warehouses for distribution to school districts, food banks and feeding operations.
2. Pet resources and personnel are staged in coordination with LSART to support the quarantine operations at Bayou Segnette, Chico and Lake Bistineau State Parks.
3. LSART VMRC on standby to support Veterinary medical care.
4. LDAF staffing the ESF 11 desk at GOHSEP SEOC and LDAF EOC.
5. Coordinating resources with East Baton Rouge Animal Control, LSU School of Veterinary Medicine, Southern University Ag Center and LSART VMRC.
6. Coordinating with Animal Control's across the state in preparation of additional request for support.
7. Communicating with Texas Animal Health Commission and providing information to facilitate agricultural shipments between our states.
8. Providing LDAF Emergency Fuel in support of the state's quarantine operations.
9. Supporting warehouse operations 24/7.

### Moving forward, LDAF anticipates performing the following activities to support the statewide response:

1. Deliver LDAF Emergency Fuel and other resources as requested
2. On standby to provide pet resource support for the quarantine operations at Bayou Segnette, Chicot, and Lake Bistineau State Parks.
3. Continue to conduct contingency planning with LDAF support partners.
4. Continue to support Emergency Commodity Distribution and warehouse operations 24/7.



# Impact from COVID-19

## **FY 21 Budget submitted in February – LDAF requests \$900,000 in State General Fund be added to the Office of Forestry's budget.**

- As it stands now, Forestry will receive an attrition cut of \$463,707 in SGF once we apply the attrition adjustment. This, added to the 2.25% cut from the Division of Administration of \$432,283, puts LDAF short in funding and budget authority of approximately \$900,000 to fully staff the Office of Forestry and avoid layoffs.
- Our \$971,168 attrition reduction disproportionately cuts State General Fund (SGF). The amount of the cut allocated to SGF by the Division of Administration is \$692,100 (71%), while only 17% of our salaries are paid for out of SGF. If the cuts were made proportionally, the SGF cut would be \$171,720 – a difference of \$520,380.

## **LDAF expenditures and/or anticipated spending due to the COVID-19 incident during FY20:**

- Potentially reimbursable by FEMA:
  - Overtime - \$166,150
  - Op Services - \$167,400
  - Supplies - \$51,400 (fuel, PPE, etc.)
- Non-reimbursable by FEMA (as of now):
  - IT Equip - \$30,000 (laptops, portable printers, WiFi cards, etc.)
  - Construction/Maintenance - \$10,000 (Plexiglass, sneeze guards, redesign cashier window, etc.)
- We also anticipate receiving and disbursing approximately \$500,000 in additional TEFAP funds during FY20. This will be done in our pass-through budget (Schedule 941). The remaining \$14.5 million in funds received from the Families First Act and the Cares Acts will be disbursed in FY21 (again through 20-941). We will need additional budget authority in Schedule 20-941 for FY21 in order to pass these federal funds on to the food banks.
- We have not identified any other federal funds that we would be eligible for from any of the stimulus acts passed to date.
- We do anticipate a reduction in revenue collections in both our Statutory Dedications (including Petroleum) and our Fees and Self-Generated categories. Our conservative estimate is a 5-10% reduction, but much of that will depend on the economy and the extent of its retraction (how much and how long it lasts).



# Department of Agriculture and Forestry

## House Amendments to HB 105

House Amendments to HB105						
HB 105	State General Fund	Interagency Transfers	Fees and Self-generated Revenues	Statutory Dedications	Federal	TOTAL
Original	\$18,802,786	\$447,345	\$7,281,777	\$37,794,025	\$9,972,168	\$74,298,101
Appropriations Amendments:	State General Fund	Interagency Transfers	Fees and Self-generated Revenues	Statutory Dedications	Federal	TOTAL
Forestry Program - SGF reduction for operating services and supplies.	(\$370,225)	\$0	\$0	\$0	\$0	(\$370,225)
ReEngrossed	\$18,432,561	\$447,345	\$7,281,777	\$37,794,025	\$9,972,168	\$73,927,876
Difference HB105 Original to HB105 ReEngrossed	(\$370,225)	\$0	\$0	\$0	\$0	(\$370,225)

Note: Dollar totals of the ReEngrossed HB105 for the 2020 Regular Session are the same as the totals in HB1 Original for the First Extraordinary Session of 2020.