

# H.013284

## MRB South GBR: LA 1 to LA 30 Connector



September 29, 2025

- Project Progress Overview
- NEPA Process Overview



ATLAS

# Completed Tasks

- Solicitation of Views
- Public Engagement in 2022:
  - Compile Stakeholders
  - 6 open house events
  - 14 stakeholder meetings
  - 12 agency briefs
- EPI (Enhanced Planning Investigation)
- PEL (Planning & Environmental Linkages) document submitted (includes Stage 0 report)
- Finalize Alternatives
  - E-11-IV
  - F-13-IV
  - F-14-V
- Surveys:
  - LiDAR
  - Topo
  - SUE
  - Elevation
  - Permit
  - Data Analysis
  - Bathymetric Studies
  - Navigation Studies

# Completed Tasks

- Bridge Design
  - Develop Design criteria
  - Draft line and grade
- Cultural
  - Cultural Field Work
  - Tribal Coordination
- Wetlands
  - Wetlands Field Work
  - Draft Wetlands Report
- Geotech
  - Geotech Field Work
  - Borings
  - Foundation Analysis
  - Embankment Analysis

- Traffic
  - Data Collection/Volume Counts
  - Build/No Build Models
  - Preliminary ROW Assessment
- Toll Analysis
  - Level 1 Study
  - Level 2 Study
  - Preliminary Cost Estimate
- Socioeconomic Analysis
- Phase 1 ESA

**FHWA Approval to Initiate NEPA Phase**

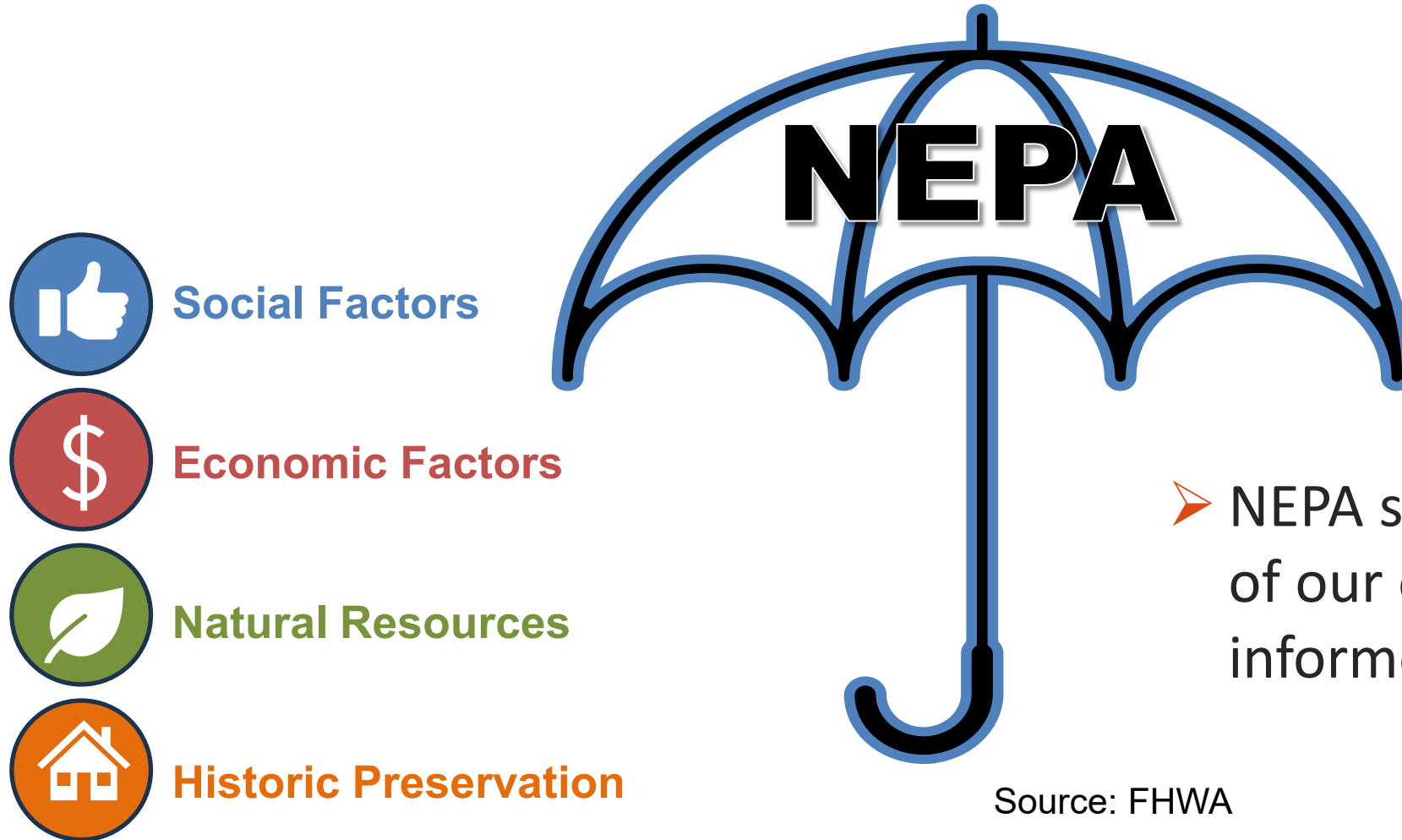
# What Will Be Completed Under NEPA?



- Finalize Purpose and Need
- Public Outreach
  - December 2025 Events
  - February 2026 Events
  - Public Hearings 2026
- Agency Coordination
- Technical Document Preparation
  - Line & Grade
  - Bridge Design
  - Final Cost Estimates
  - Hydrology Studies
  - Traffic Study
- Field Surveys:
  - Biological Resources
  - Cultural Resources
  - Air
  - Noise
- Environmental Assessment
  - Draft EA
  - Agency Review
  - Final EA

The logo for ATLAS, featuring the word "ATLAS" in a bold, blue, sans-serif font. A stylized blue line, resembling a road or a wave, curves around the letters, starting from the left and ending on the right.

# Importance of NEPA



➤ NEPA serves as the foundation of our environmental process for informed decision-making.

Source: FHWA

# What is NEPA?

- The National Environmental Policy Act of 1969
  - Created the Council on Environmental Quality (CEQ)
  - Reviews a project's impact on Natural and Human environments, which means...



# The Natural Environment Is...



- Plant and Animal Species / Natural Communities
- Wetlands and Other Waters of the US
- Cultural, Archaeological and Paleontological Resources
- Geology and Soils
- Seismology and Topography
- Water Quality and Hydrology, Wild & Scenic Rivers
- Stormwater
- Floodplains
- Coastal Zones
- Agricultural and Timber Lands

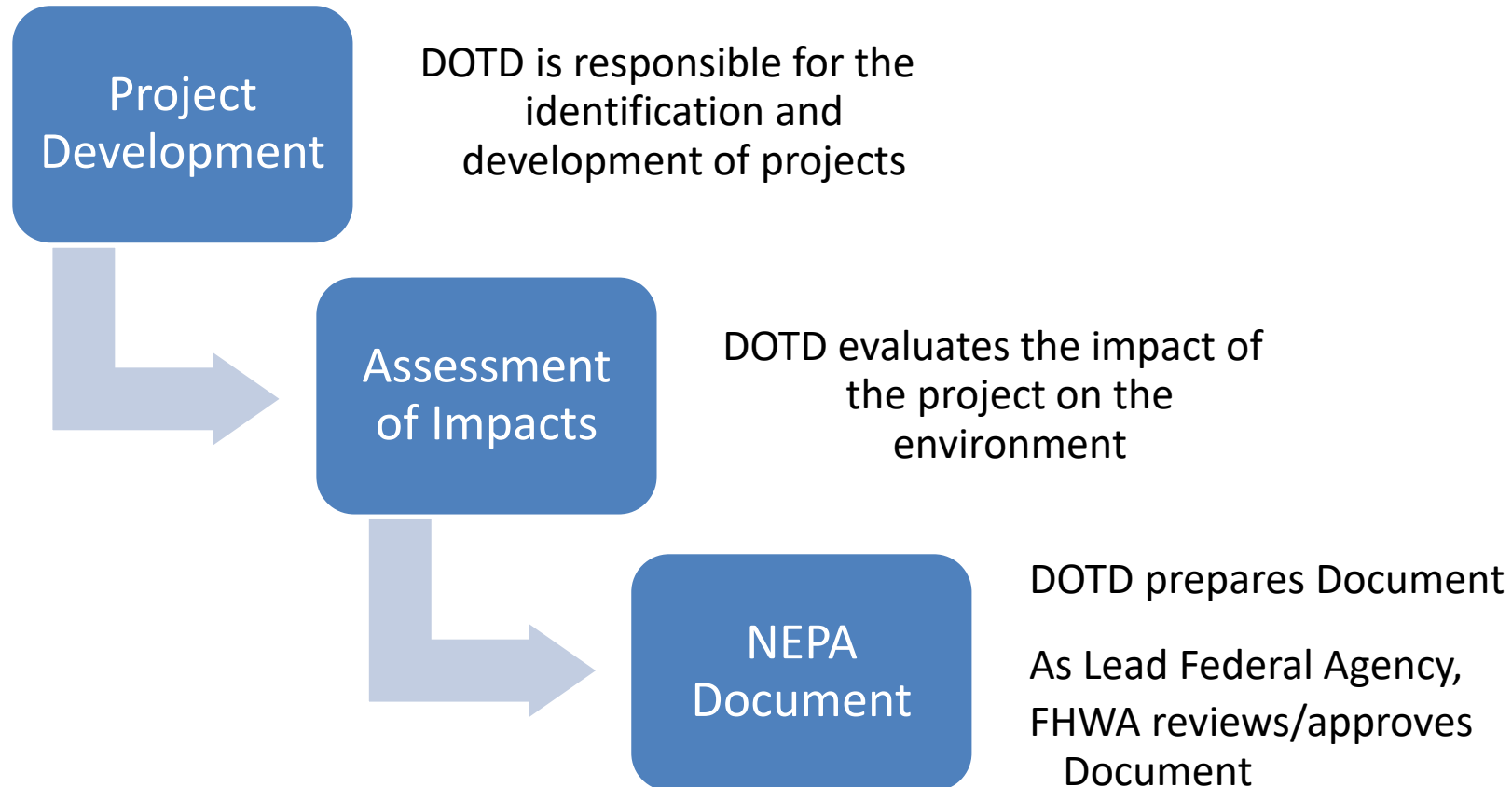
# The Human Environment Is...



- The Built Environment, Historic Resources
- Aesthetics and Visual Resources
- Noise
- Hazardous Waste and Materials
- Community Growth and Cohesion
- Parks and Recreation Facilities
- Public Services
- Utilities
- Consistency with State, Regional and Local Plans and Programs

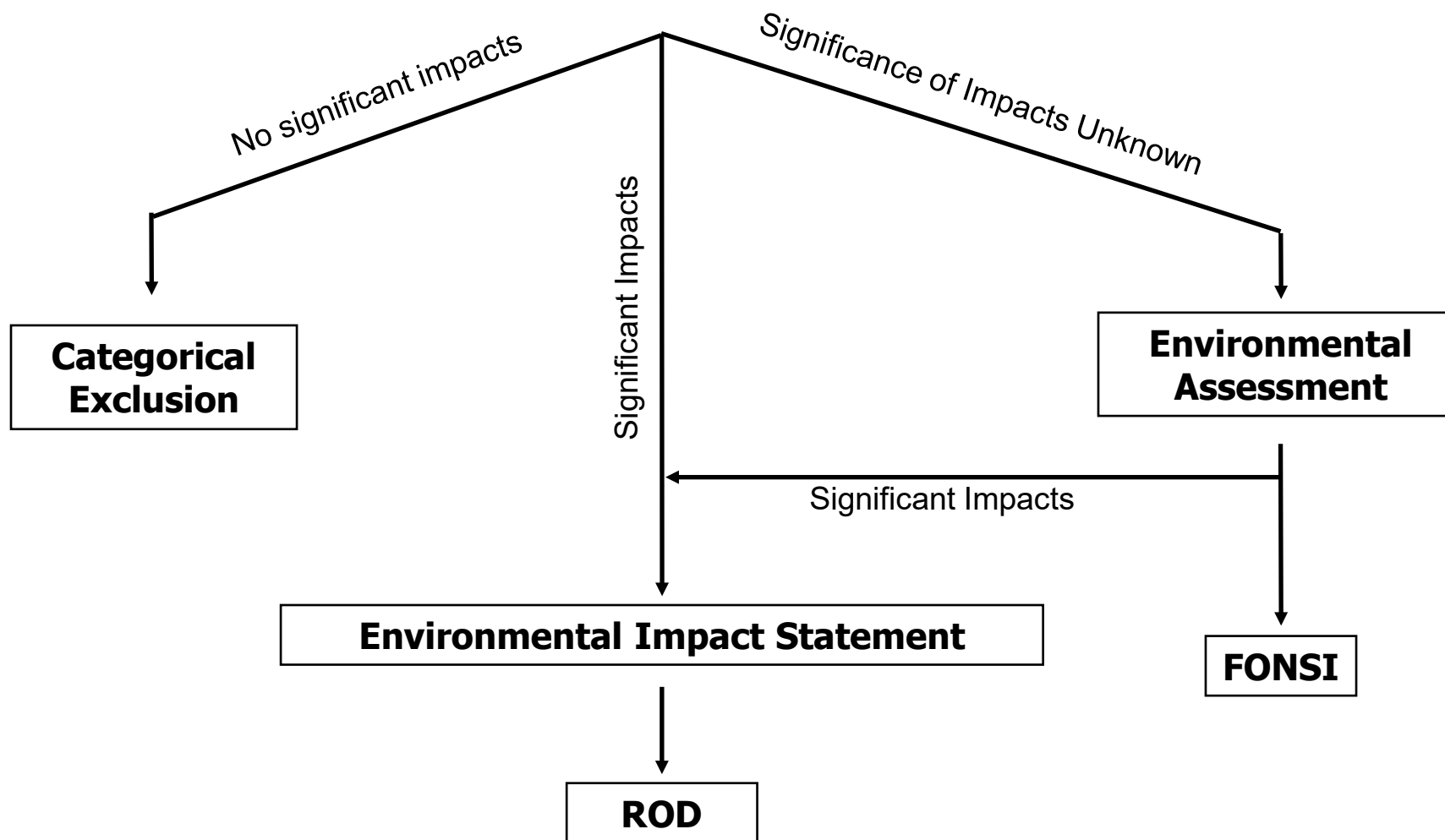


# NEPA & Transportation Decision Making



ATLAS

# Classes of Action in NEPA



Source: FHWA

# What are the Next Steps?



# Public Engagement

## ■ December 2025 Events (2)

- Tuesday Dec. 9, 5 – 7pm  
@ St. Gabriel Community Center
- Wednesday, Dec. 10, 5 – 7pm  
@ Plaquemine Community  
Center

## ■ Q1 - 2026 Events (4):

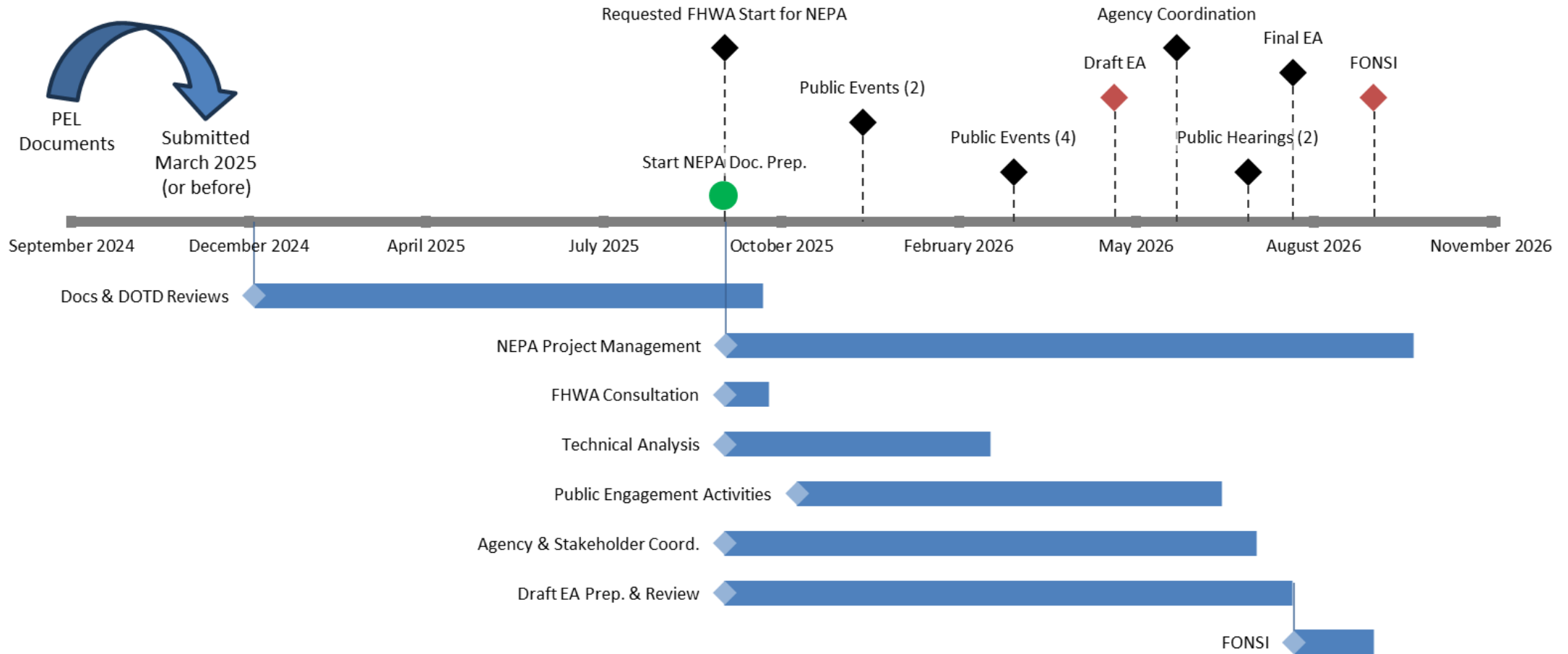
- 2 locations on east bank (TBD)
- 2 locations on west bank (TBD)

## ■ Q2/Q3 - 2026 Public Hearings\* (2)

\* Pending Agency Review and Comments

# Anticipated Schedule

## Mississippi River Bridge South: NEPA Phase





# Potential Public Meeting Venues



# Opportunities for Public Involvement

## ➤ When?

- During project Scoping, at the start of a project
- At public meetings during project evaluations/technical analysis
- At public hearing before final decision on project is made

## ➤ Where?

- Locations which are convenient and accessible to all

## ➤ How?

- A combination of presentations, video recordings or broadcasts, and exhibit areas staffed by project representatives

## ➤ Why?

- Required part of the process and informs decision making

# H.013284

## MRB South GBR: LA 1 to LA 30 Connector



mrbsouth.com

### Project Contact:

Atlas - Anna Choudhuri

[Ananya.Choudhuri@oneatlas.com](mailto:Ananya.Choudhuri@oneatlas.com)

DOTD - Christina Brignac

[Christina.brignac@la.gov](mailto:Christina.brignac@la.gov)



ATLAS



# **H.003931**

## **I-10 Calcasieu River Bridge**

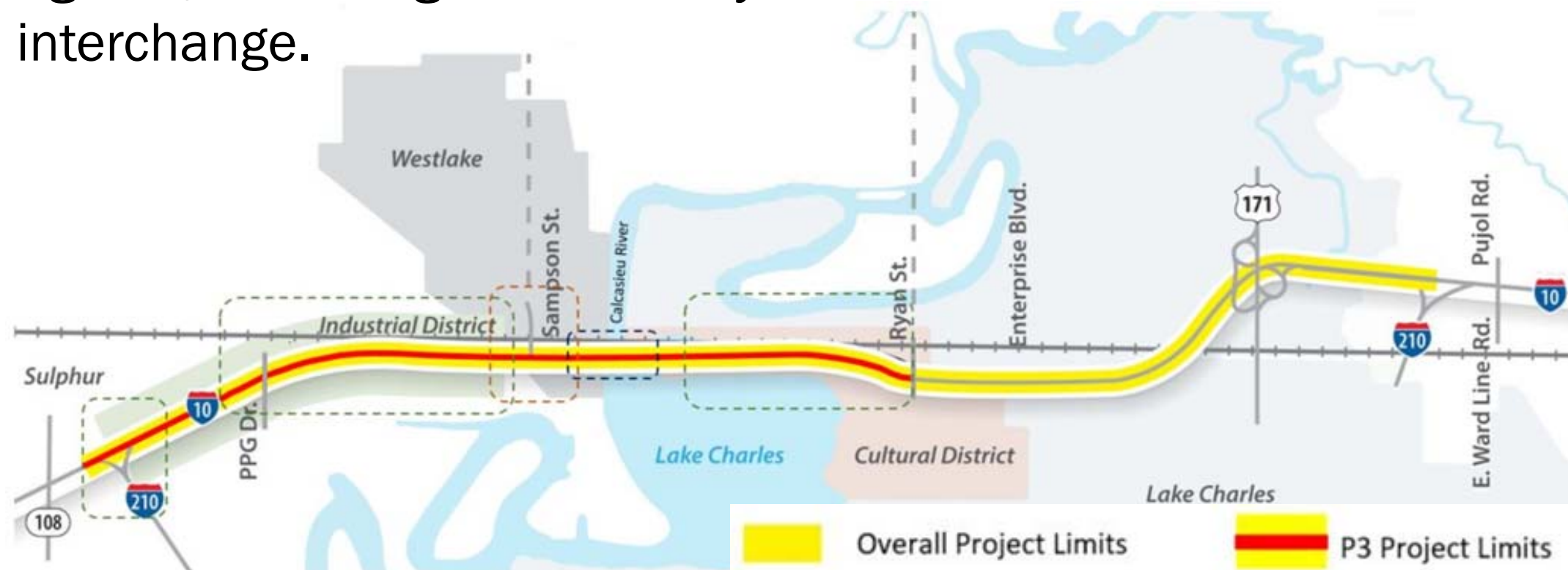
### **Public Private Partnership (P3)**

September 29, 2025  
Project Overview



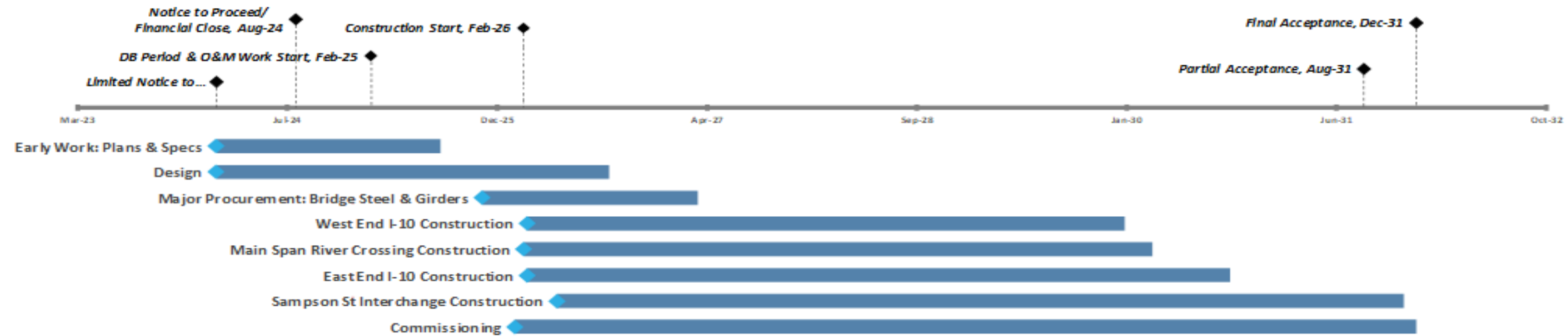
# Project Scope

- LA DOTD obtained environmental approval for a project to construct improvements on I-10 between its eastern and western interchanges with I-210.
- LA DOTD entered into a Public-Private Partnership (P3) agreement with Calcasieu Bridge Partners (CBP) to design, build, fund, operate, and maintain a portion of the project along I-10, extending from near Ryan Street in Lake Charles to the western I-210 interchange.





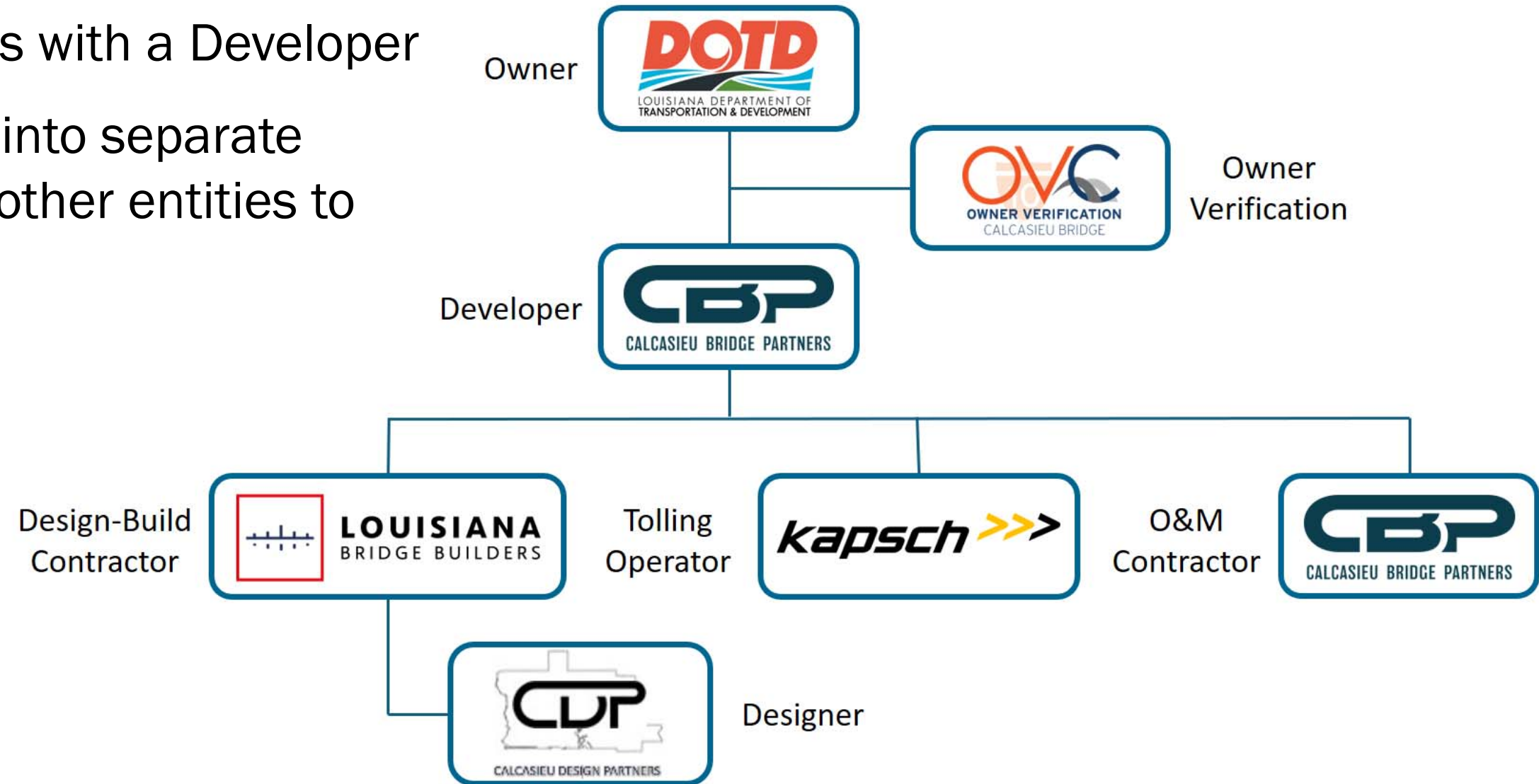
# Project Scope



# Public Private Partnership Structure



- LA DOTD contracts with a Developer
- Developer enters into separate agreements with other entities to perform the work





# Project Tolling

- Toll revenue is a source of funding for the project
- Toll rates were established by the Developer to bridge the gap between available public funds and the project cost
- Toll rates vary based on vehicle type and toll tag usage
- Tolls will be collected electronically
- Toll rates were established using 2023 dollars but will adjust over time based on the Consumer Price Index



# Project Timeline



## ➤ 2020

*December*

- Approval from Legislature to pursue P3

## ➤ 2021

*January*

- Issued Notice of Intent

*March*

- Received Letters of Interest
- Issued Request for Qualifications

*June*

- Received Statements of Qualifications

*July*

- Issued Shortlist

*December*

- Issued Draft Request for Proposals

## ➤ 2022

- Interacted with Proposers to refine documents

## ➤ 2023

*March*

- Issued Final Request for Proposals

## ➤ 2023 (cont.)

*June*

- Received Proposals

*July*

- Issued Notification of Selection for Negotiations

*August*

- Held Public Meeting on Selected Proposal

## ➤ 2024

*January*

- Approval from Legislature to enter into P3
- Signed Contract with Developer

*February*

- Issued Limited Notice to Proceed

*August*

- Closed Financials and Issued Notice to Proceed

## ➤ 2026

*March*

- Groundbreaking and Commencement of Construction

## ➤ 2031

*August*

- Partial Acceptance and Start of Tolling

*December*

- Final Acceptance

## ➤ 2081

*August*

- Handback and End of Tolling

# Questions

